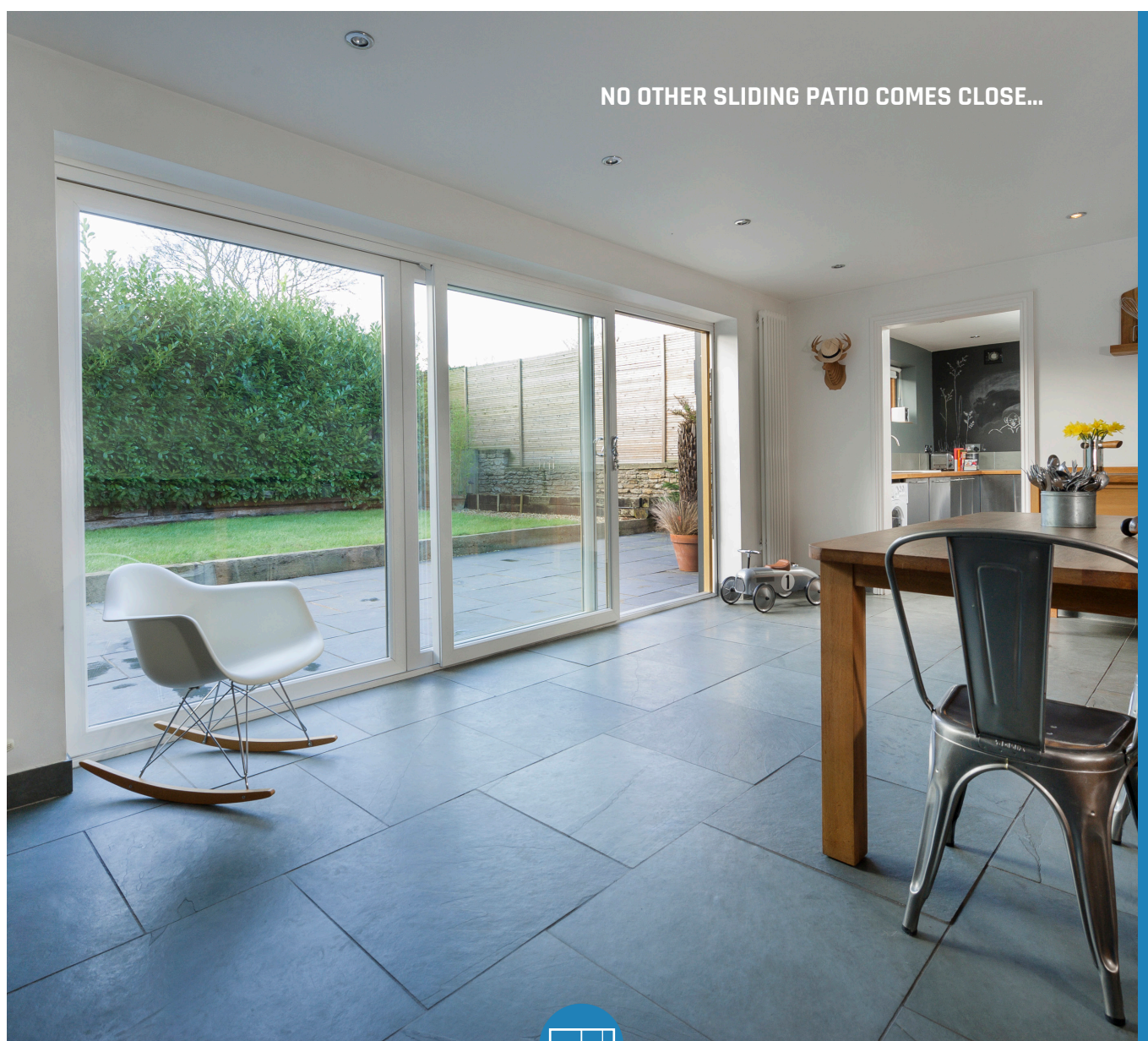


SLIDER24+



NEW SCULPTURED SASH NOW AVAILABLE | ENHANCED SECURITY AND ACCESS | PAS24 CERTIFIED | SUITES WITH 2800
HERITAGE RANGE WINDOWS AND DOORS | NOW AVAILABLE IN BOTH CHAMFERED AND SCULPTURED SASH



TICKS ALL THE BOXES

Our NEW Slider24 sliding patio door is a star in a commodity market. Deceuninck is about innovation, performance and looks, so our challenge to our designers was to develop a sliding patio door installers would love to sell and homeowners would love to buy. A patio door that would leave competitors standing.

We demanded the best in weather and energy performance, strength and security. We wanted outstanding performance and stunning looks to match our famous pretty windows. With Slider24 we got everything we asked for.

We now have a door that ticks all the boxes.





No.1 for Colour
30 Colourways from
Stock

PAS24 Certified
2, 3 and 4 Pane

**Outstanding
Weather
Performance**

Best Energy Rating
A+ Rating (Double
Glazed)

Low Threshold
Disabled access and
easy mobility

**Document M
and Q Compliant**
Approved Security and
Access

**No Interlock Plunge
Bolts**
Improving Access &
Aesthetics

Security Guarantee
Recognised by
Neighbourhood Watch



**ALSO AVAILABLE AS
SCULPTURED SASH**
Suites with Heritage 2800 Windows



The Slider24+

Built for the Great Indoors

A unique sliding
patio door that
suits with our
pretty windows
in performance,
style and colour.

IT'S EVERYTHING YOU'D WANT AND MORE IN A SLIDING PATIO DOOR

Our market leading
colour from stock means
homeowners can choose
from 30 colourways for their
new windows and sliding
patio door, including matching
ancillaries, trims and
accessories, and have it all
delivered on the same short
lead time as white. If you're
looking for the perfect frame
for the perfect view our best in
class Slider24+ is for you.





CLEAN LINES

A unique sliding patio door that suites with our 2800 Heritage range of Chamfered and Sculptured sash windows



SLIDER 24+

ENHANCED SECURITY AND ACCESS

The Slider 24+ has all the benefits of the Slider24 but with a new sash interlock and (full) ERA locking system to meet the requirements of Approved Document Q and M as standard.



PAS24 CORNER DRIVE AND KEEP UPGRADE KIT

- 12 point locking
- Anti-lift device
- PAS24 certified



DOOR FURNITURE

STANDARD LOCK AND KEEP SET

- 6 point locking
- Bi-directional hook throw for additional security against jemmying
- Forged brass hooks

KEEP INFILL

- Clip-fit aluminium infill for improved aesthetics

INVINCIBLE CYLINDER

- Reinforced with 5 times more metal than a standard cylinder
- 6 hardened high security pins for the ultimate anti-pick, drill and bump resistance
- Robust shape is a strong visual deterrent
- Independently tested: British Standard Kitemark TS007 and Secured By Design accredited



PEMBROKE INVINCIBLE HANDLE SET

- Longer lever to ease operation
- Dedicated design to suit Invincible cylinder
- Available in White, Black, Chrome and Graphite



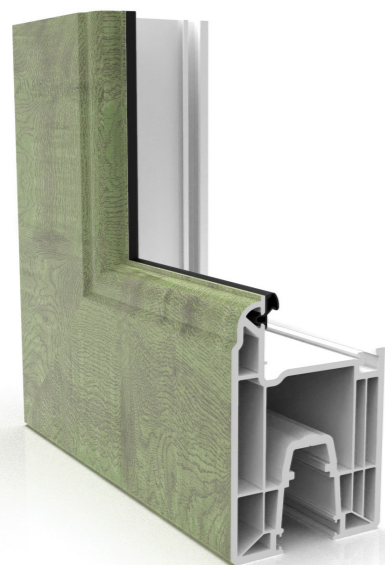
NOTHING COMES CLOSE TO THE
SLIDER 24+ PATIO DOOR

SLIDER24+

NEW SCULPTURED SASH

The **NEW** Sculptured Slider24+ patio door looks great in any surrounding; its subtle charm and elegance transforms the building like no other.

- High energy rating and weather performance
- Enhanced security PAS24 Approved
- Double or triple glazing available
- Low maintenance pvc-u frames
- Available in 30 colourways from stock
- 10 Year guarantee



ADD A SPLASH OF COLOUR

Our sliding doors come in a wide range of colours which retain colour even through natural wear and tear and the UK's unpredictable weather.

See page 11 for more information on colour.



Super Efficient

The Slider24+ offers excellent insulation qualities which effectively reduce energy and heating costs. They are extremely low maintenance and provide a cost-effective solution to any home improvement project.



Comfortable Living

The Slider24+ provides a host of advantages to the quality of life. The patio door acts as strong and durable insulators against the harsh elements.



Sound-Proof

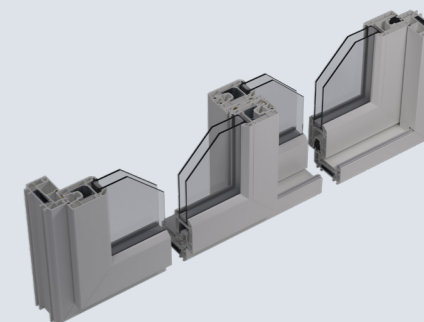
Glazing options to maximise energy efficiency and/or sound proofing.



Safe and Secure

The Slider24+ provides a secure and protective solution for any home with multi-point locking systems inbuilt to give you peace of mind.

CHAMFERED SASH



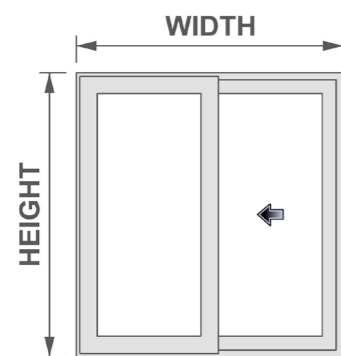
The beautiful Chamfered shape adds a stylish elegance to the Slider24+ Patio Door. The

Chamfered contours integrate easily in all types of architecture and design with a range of colours and finishes that ensure you can find the perfect window for your home.

KEY FEATURES

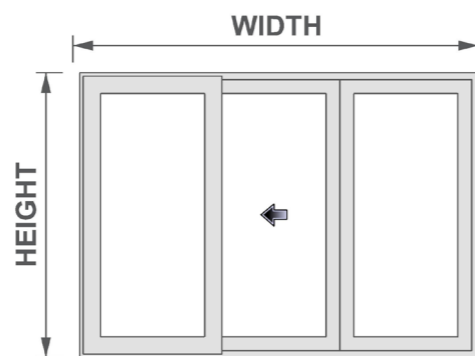
- High energy rating and weather performance
- Enhanced security PAS 24 Approved
- Choice of double or triple glazing available
- Low maintenance PVC-U frames
- Available in 30 colourways from stock

CONFIGURATIONS



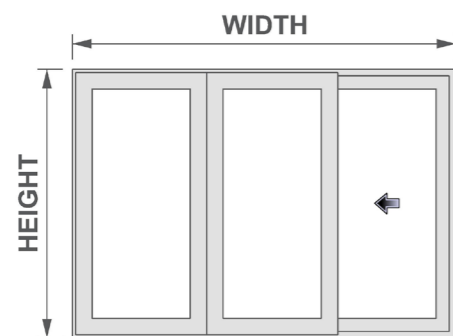
2 pane

Minimum Frame Size (mm)		Minimum Frame Size (mm)	
Width	Height	Width	Height
1500	1750	3000	2400



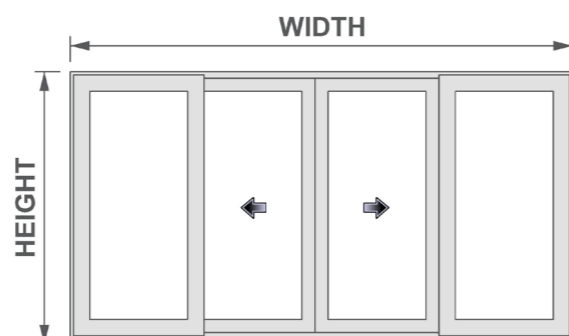
3 pane (central slider)

Minimum Frame Size (mm)		Minimum Frame Size (mm)	
Width	Height	Width	Height
2000	1750	4500	2400



3 pane (end slider)

Minimum Frame Size (mm)		Minimum Frame Size (mm)	
Width	Height	Width	Height
2000	1750	4500	2400



4 pane

Minimum Frame Size (mm)		Minimum Frame Size (mm)	
Width	Height	Width	Height
2600	1750	5900	2400

NB. Sizes are theoretical, contact us for maximum tested sizes.

30 COLOURWAYS FROM STOCK

A unique range of woodgrain foil colours in 30 colourways in stock, complete with matching ancillaries, trims and accessories.

Heritage Colour Range - Surcharge applies.

ANTHRACITE SMOOTH / HERITAGE WHITE	BLACK ASH / HERITAGE WHITE	AGATE GREY / HERITAGE WHITE	NUT TREE / WHITE PVC	NUT TREE BOTH SIDES	BLACK SMOOTH MATT / WHITE PVC
ENGLISH OAK / HERITAGE WHITE	ENGLISH OAK BOTH SIDES	HERITAGE WHITE / ENGLISH OAK	BLACK ASH / WHITE PVC	BLACK ASH BOTH SIDES	GOLDEN OAK / WHITE PVC
ICE CREAM / HERITAGE WHITE	HERITAGE WHITE BOTH SIDES	GREY ALUMINIUM / WHITE PVC	GOLDEN OAK BOTH SIDES	IRISH OAK / WHITE PVC	IRISH OAK BOTH SIDES
ANTHRACITE SMOOTH MATT / WHITE PVC	ANTHRACITE SMOOTH MATT BOTH SIDES	ANTHRACITE GRAINED / WHITE PVC	CHARTWELL GREEN / WHITE PVC	CHARTWELL GREEN BOTH SIDES	CLASSIC CREAM / WHITE PVC
ANTHRACITE GRAINED BOTH SIDES	ROSEWOOD / WHITE PVC	ROSEWOOD BOTH SIDES	CLASSIC CREAM BOTH SIDES	WHITE GRAIN / WHITE PVC	WHITE GRAIN BOTH SIDES



